

CONTAINER APPLICATION

Example of tracking of a container with a Trackunit5YearBattery (ME301-7)

- This customer is one of the largest marine fleet owners in the world. The service department runs the logistics of the spare parts from a central location in Northern Europe for all ships wherever they are located in the world.
- In order to supply the necessary spare parts to the ship, the customer uses half or full size sea containers. These containers contain high value spare parts for a ship, but little value for the average citizen. For the ship, forwarder or agency though, these parts are representing a lot of money as the ship is stuck at quay, meaning a significant loss every day.
- The tracking with Trackunit is for this reason not an anti theft solution, but a dispatching solution for the forecast of the delivery of it.
- Trackunit has developed a specific self powered unit, the 5YearBattery unit, which will report a nr of times (settings can be customized by users)

Specifications:

- ME301 Trackunit
- Chargeable Li-ion Battery 26.1 AH
- Dimensions : 160 x 80 x 42
- Weight : 585 gr
- IP67



Daily positions reporting and estimated battery standby time

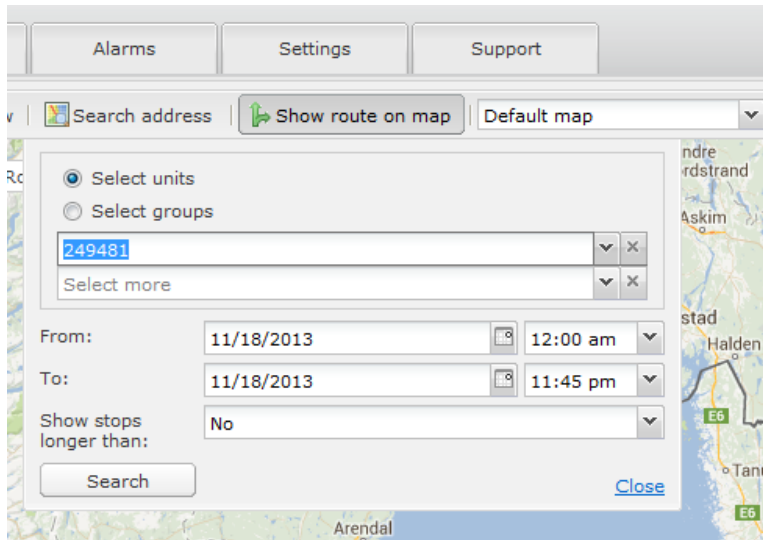
1 position /day	up to 5 years before loading
4 Position/day	up to 3 years before loading
10 positions/day	up to 1 year before loading
24 positions/day	up to 6 months before loading

CONTAINER APPLICATION

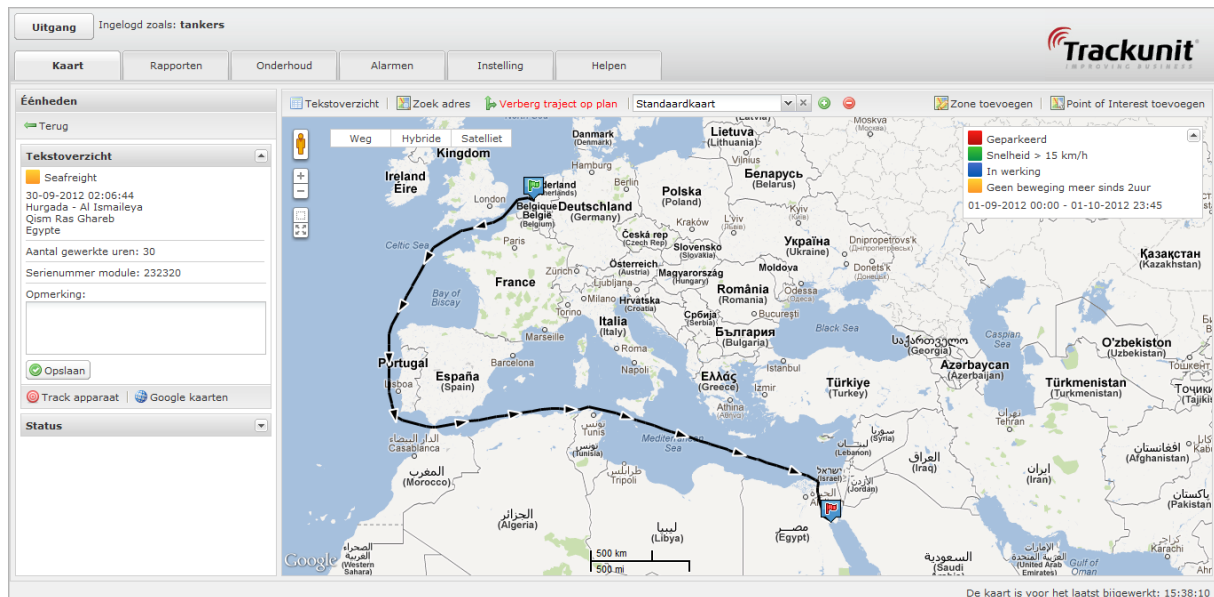
Tracking on 'map'

To analyze a trip you need to select the unit and define a start day/time and end day/time.

('From:'= green flag) and end time('To:' =red flag)



The Route on map will show the trip between 'From' and 'To' in full view:



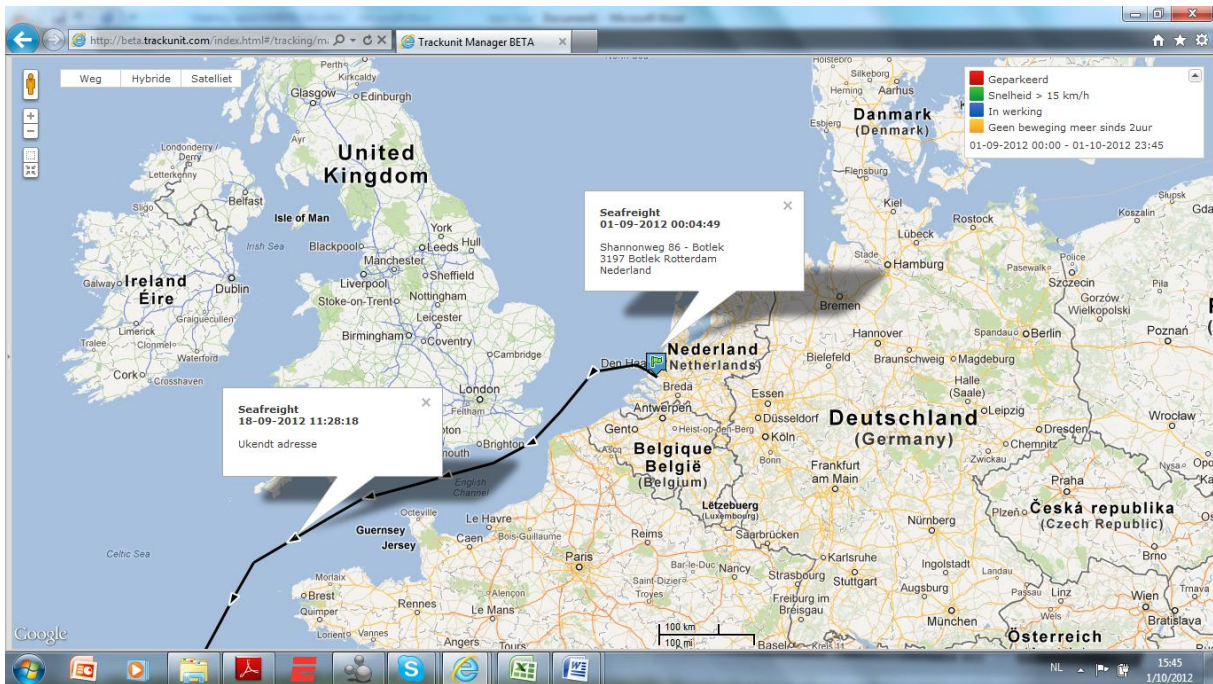
IMPORTANT:

The ME301-7 is, like all our trackers equipped with a GPS module for positioning and GPRS module for communication over the GSM network. When out of GSM reach, the unit continue recording time and position but will 'store' all data in the main memory . When back into a GSM covered zone (close to harbours) it will send the missing data to the server and complete the route on map.

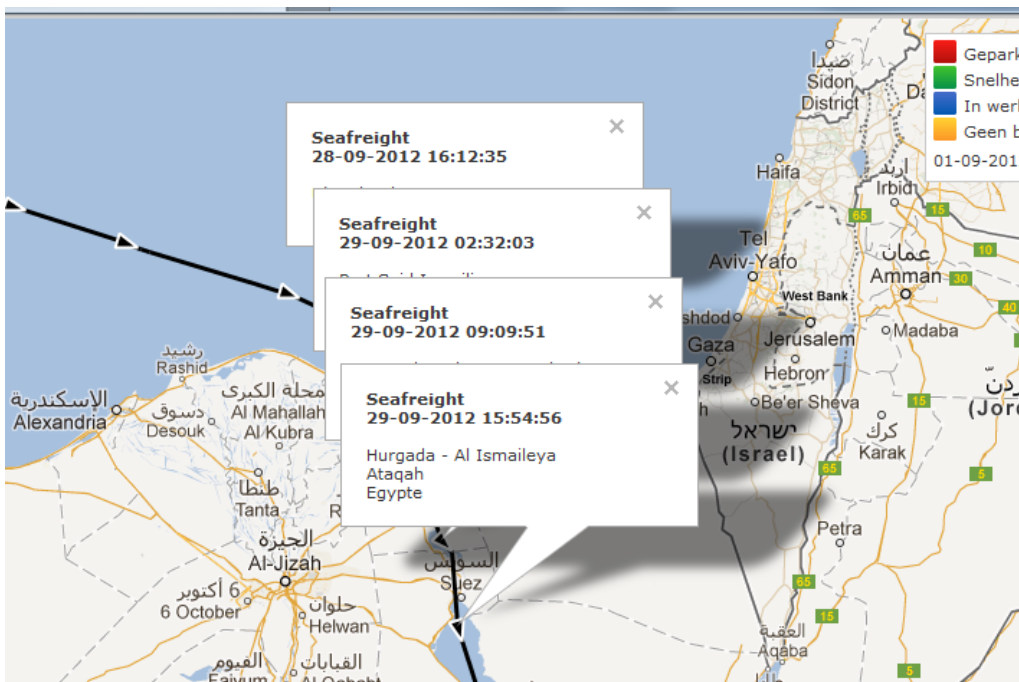
CONTAINER APPLICATION

PRECISION:

Example to show how 'precise' the reporting of the trip is being recorded and presented. The 'zoom' function will allow the user to increase the number of reporting points (black arrows)



Zooming for more precise route details at Suez channel. The reporting frequency of this unit is set on 'every 6hrs'



CONTAINER APPLICATION

Positioning of the 5YearBattery unit.

Hereunder you can see a few installation suggestions for container applications. (This unit has magnetic fixation pads)



Installation on the doors is very 'delicate' because subject to being hit while container being maneuvered.

There for, an installation at the side of the container in between two ribs is a better solution.

However, the logistics people estimate that it will be removed very soon by 'curiosity' of drivers, dock workers ... etc.

Trackunit has also developed units built as imitation 'ventilation caps' to be less 'visible'

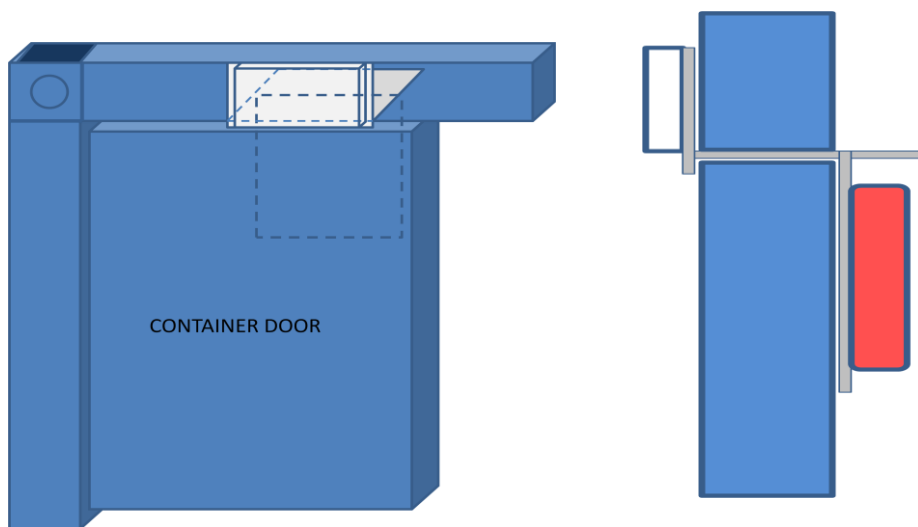


CONTAINER APPLICATION

Special design:

For larger orders (200+) a specific design can be elaborated like hereunder where batteries are inside the container.

In the situation hereunder the batteries (red) are kept inside the container



Front view

Side view cut

Other applications:

The 5Year Battery unit can be used for many other applications on or in objects that have no power supply such as:

- train wagons
- work site cabins-containers
- trailers
- ...

It is also an excellent solution to be placed into cars, machines, ... also which need 'temporarily' a racking system against eventual theft or objects, cars, machines, ...also that are stored and which are planned to receive a standard system but not equipped yet.